

## DSL-2740B Features

- ADSL2+ Gateway with 4-Port Ethernet Switch and WiFi
- Interoperable with Leading DSLAMs

## Built-in Support For

- Connect and Surf®
- TR-069 Device Management
- Advanced Data Services
  - Managed WiFi
  - Managed Firewall
  - Content Filtering (Parental Controls)
  - Internet Time Blocking

## Why ClearVision?

- Fewer truck rolls & shorter support calls
- Better managed IPTV deployments
- New incremental service revenues
- Increased customer satisfaction and retention
- Multi-vendor device management

## D-Link ADSL2/2+ Gateway – Powered by ClearAccess®

*The D-Link DSL-2740B is a robust 4-port gateway with Wireless N that enables the delivery of advanced features and services over IP-based ADSL and ADSL2+ networks.*

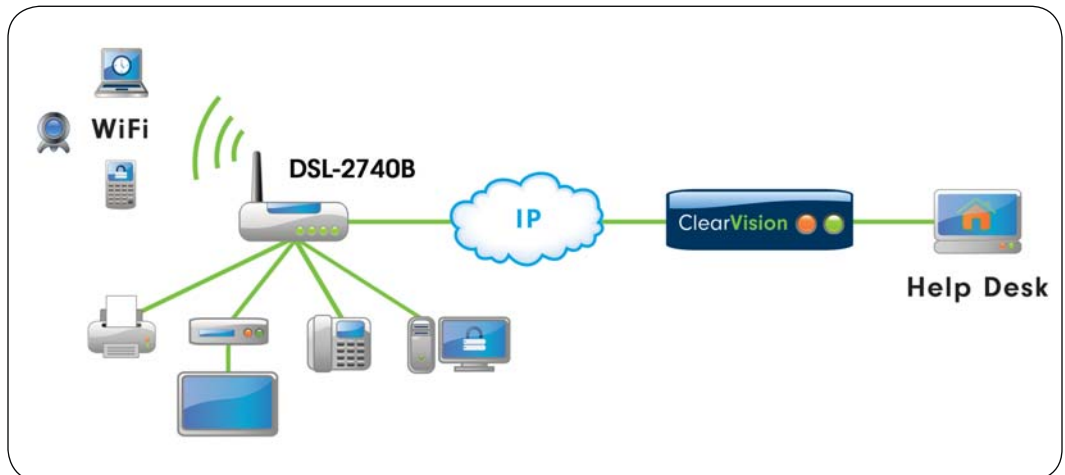
### This is no ordinary ADSL2+ gateway with WiFi.

The 2740B will provide you with outstanding data transfer speeds, and when paired with the ClearVision Management System you will see fewer truck rolls, shorter support calls, and new service revenues.

Connect and Surf® eliminates gateway provisioning of network parameters (e.g. PVCs and VLANs) and subscriber credentials (e.g. PPPoE and PPPoA) while greatly simplifying IPTV deployments. For example, by leveraging ClearVision's TR-069 management capabilities you are able to remotely configure Ethernet ports on the gateway to accommodate any number of IPTV set-top boxes offering greater deployment flexibility. The DSL-2740B also enables a variety of Advanced Data Services (e.g. Managed WiFi, Managed Firewall, Content Filtering, and Internet Time Blocking) allowing you to increase profitability through new service revenues.



DSL-2740B



## The ClearAccess® Advantage

- Truck rolls and support calls are minimized as gateway activation, configuration, troubleshooting, and maintenance are performed remotely by ClearVision.
- Bulk CPE configuration changes, remote firmware upgrades, and a wealth of new management tools and reporting information enable you to be proactive and maintain a well-tuned, future-proof broadband network.
- ClearAccess Advanced Data Services enable you to easily deploy new revenue generating data services without overburdening your support team. In a matter of seconds either the subscriber or support personnel can setup and manage the various services as required.



## ADSL Standards & Compliance:

- Annex A/C, ANSI T1.413 Issue 2, ITU-T G.992.1 (G.DMT), G.992.2 (G.Lite), G.992.3 (ADSL 2), G.992.5 (ADSL 2+) and G.992.5 (Annex M)
- Auto connect with Dual Latency Support (Fast and Interleave)
- Comply with handshake protocol defined in ITU-T G.994.1 (G.hs)

## Routing Features

- RIP1 (RFC 1058), RIP2 (RFC 1389) and Static Routing
- NAT, NATP and Extensive ALG Support
- DHCP Client and Server
- DNS Relay
- IGMP Proxy
- Ethernet to ADSL Self-learning
- DMZ Host Support
- Port Forwarding and Triggering
- SIP Traversal
- IPSec Tunneling
- VPN Support
- Dynamic DNS

## Security

- Stateful Packet Inspection Firewall
- Configurable Firewall Function
- Local and Trusted Certificate Verification
- IP/URL/Port/MAC Filtering
- Supports PAP and CHAP with PPP (RFC 1334)

## WAN Protocols

- Multiple Protocol over AAL5: LLC and VC-Mux (RFC 1483/2684)
- Classical IP (RFC 1577): Direct IP (Static) Direct IP (DHCP)
- PPPoA (RFC 2364)
- PPPoE (RFC 2516)

## ATM

- Supports ATM Forum UNI 3.1/4.0
- Up to 8 ATM PVCs
- Per-PVC packet level QoS
- Supports UBR, VBR and CBR traffic shaping
- OAM F4/F5 loopback support (I.610)

## Wireless LAN

- 802.11n (draft 2.0)/b/g wireless access point
- Encryption: WEP, WPA-PSK, WPA2, WPA2-PSK, Mixed WPA2/WPA-PSK
- MAC addressed-based access control
- Modulation: DSSS (b); OFDM (g)
- Channels: 11 (US/Can), 13 (ETSI)
- Wireless Distribution System (WDS)
- Output Power: > 15dBm

## Remote Management

- TR-069 Device Management
- TR-098 Gateway Device Model
- TR-106 Generic Device Model
- TR-111 LAN Device Management
- Automatic Subscriber Activation
- Real-time Status and Reporting
- Firmware Flash, Restore, and Upgrade
- SNMP, Telnet, HTTP, FTP and TFTP
- Configuration Backup and Restore
- On-demand, Value-added Service Provisioning (e.g. VoIP, IPTV, etc.)

## Physical Interfaces

- One (1) ADSL2+ WAN port (RJ-11)
- Four (4) 10/100 Ethernet LAN Ports (RJ-45) with Auto-detection
- Two (2) External Antenna
- Built-in Wall Mounting Keyholes

## Physical Specifications

- Dims (in): 7.7 (w) x 5.8 (l) x 1.3 (h)

## Environment Operating Temp:

- 0°C to 40°C
- Humidity: 5% - 95% (non-condensing)